

# Embedding Interventions into Observational Studies: An NHLBI Perspective

**Larissa Avilés-Santa, MD, MPH**

Medical Officer

Epidemiology Branch

Division of Cardiovascular Sciences

National Heart, Lung, and Blood Institute

July 29, 2013



# Why We Must Pay Attention



EDITORIAL

## A Threat to Medical Innovation

With 10 to 15% paylines at some institutes (or even less), the current situation makes grant evaluation nearly impossible and is putting truly excellent laboratories out of business. In the spirit of “never waste a good crisis,” a serious evaluation of many NIH extramural policies and programs is warranted. They include centers and other large collective funding efforts as well as ***expensive clinical and epidemiological research.***



## Health Care Systems (HCS) Research Collaboratory

Publications Search

GO

OVERVIEW

WORKING GROUP MEMBERS

RESEARCH FUNDING

PUBLICATIONS/NEWS

MEETING/ACTIVITIES

[Common Fund Home](#) > [Programs](#) > [HCS Research Collaboratory](#)

f Like

557

t Follow

Printer Friendly



Text Size

A

A

A

### Program Snapshot

The overall goal of the **Common Fund's Health Care System (HCS) Research Collaboratory** is to strengthen the national capacity to implement cost-effective large-scale research studies that engage health care delivery organizations as research partners. The aim of the program is to provide a framework of implementation methods and best practices that will enable the participation of many health care systems in clinical research...

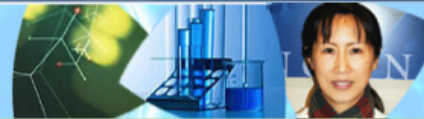
[Read more...](#)

The overall goal of the **Common's Fund's Health Care System (HCS) Collaboratory** is to strengthen the national capacity to implement cost-effective large-scale research studies that engage health care delivery organizations as research partners. The aim of the program is to provide a framework of implementation methods and best practices that will enable the participation of many health care systems in clinical research...

**Strategic Planning activities for the HCS Research Collaboratory program**

HEALTH CARE  
DELIVERY  
ORGANIZATIONS



[HOME](#)[PROGRAMS](#)[RESEARCH FUNDING](#)[NEWS & EVENTS](#)[MULTIMEDIA](#)[HIGHLIGHTS](#)[ABOUT](#)[CONTACTS](#)

## Health Care Systems (HCS) Research Collaboratory


[OVERVIEW](#)[WORKING GROUP MEMBERS](#)[RESEARCH FUNDING](#)[PUBLICATIONS/NEWS](#)[MEETING/ACTIVITIES](#)
[Common Fund Home](#) > [Programs](#) > [HCS Research Collaboratory](#) > Funded Research

1k








## Funded Research

### [NIH Health Care Systems Research Collaboratory - Pragmatic Clinical Trials Demonstration Projects \(UH2/UH3\) RFA-RM-12-002](#)

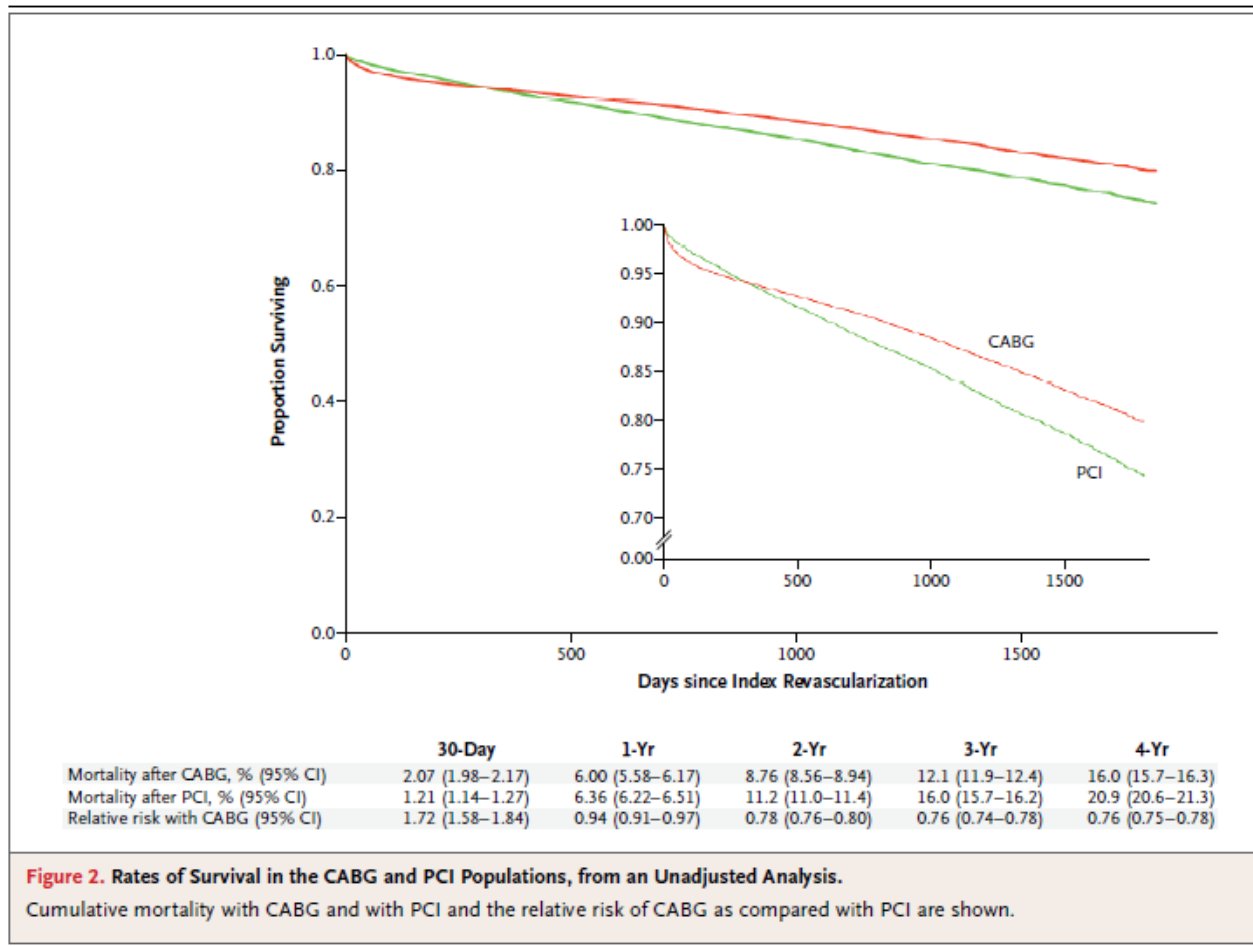
PI Name	Institution Name	Title
CORONADO, GLORIA D (contact) DEVOE, JENNIFER E GREEN, BEVERLY BETH	KAISER FOUNDATION RESEARCH INSTITUTE	<a href="#">Strategies and Opportunities to Stop Colon Cancer in Priority Populations</a>
DEBAR, LYNN LARSON	KAISER FOUNDATION RESEARCH INSTITUTE	<a href="#">Collaborative Care for Chronic Pain in Primary Care</a>
DEMBER, LAURA M	UNIVERSITY OF PENNSYLVANIA	<a href="#">Pragmatic Trials in Maintenance Hemodialysis</a>
HUANG, SUSAN S. (contact) PLATT, RICHARD	UNIVERSITY OF CALIFORNIA IRVINE	<a href="#">Decreasing Bioburden to Reduce Healthcare-Associated Infections and Readmissions</a>
JARVIK, JEFFREY G	UNIVERSITY OF WASHINGTON	<a href="#">A Pragmatic Trial of Lumbar Image Reporting with Epidemiology (LIRE)</a>
ROSENTHAL, GARY E	UNIVERSITY OF IOWA	<a href="#">Nighttime Dosing of Anti-Hypertensive Medications: A Pragmatic Clinical Trial</a>
SIMON, GREGORY E	GROUP HEALTH COOPERATIVE	<a href="#">Pragmatic trial of population-based programs to prevent suicide attempt</a>

[Up to Top](#)

### [NIH Health Care Systems Research Collaboratory - Coordinating Center \(U54\) RFA-RM-11-021](#)

PI Name	Institution Name	Title
CALIFF, ROBERT M	DUKE UNIVERSITY	<a href="#">Health Care Systems Research Collaboratory - Coordinating Center</a>

# ASCERT: Leveraging Registries



# Embedded clinical trials into cohort studies already exist!

## NHLBI Workshop held April 8-9, 2013

- Findings from the cohort study
- Cohort studies infrastructure
- Registries
- Partnerships with stakeholders



# NHLBI-NIH view

- Very strong need to change the way we do clinical trials
- Pragmatic
- Large-scale
- Unanswered clinical questions
- Benefit or advantage of cohorts, registries or large clinical databases
- Low-cost R01s





National Heart, Lung,  
and Blood Institute